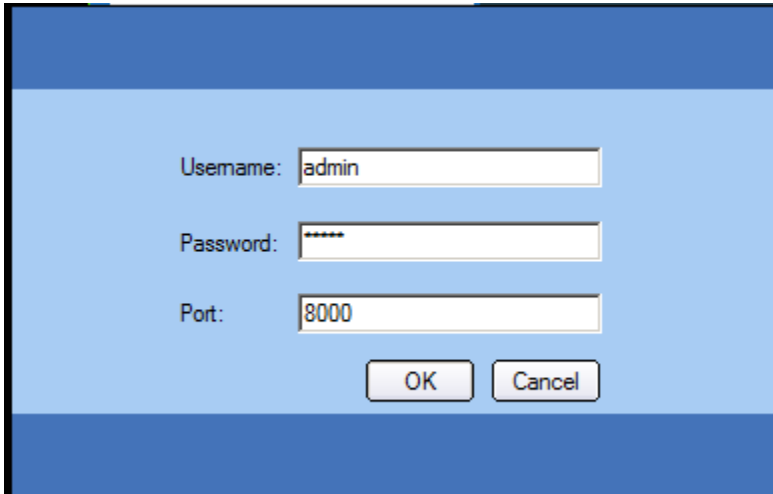


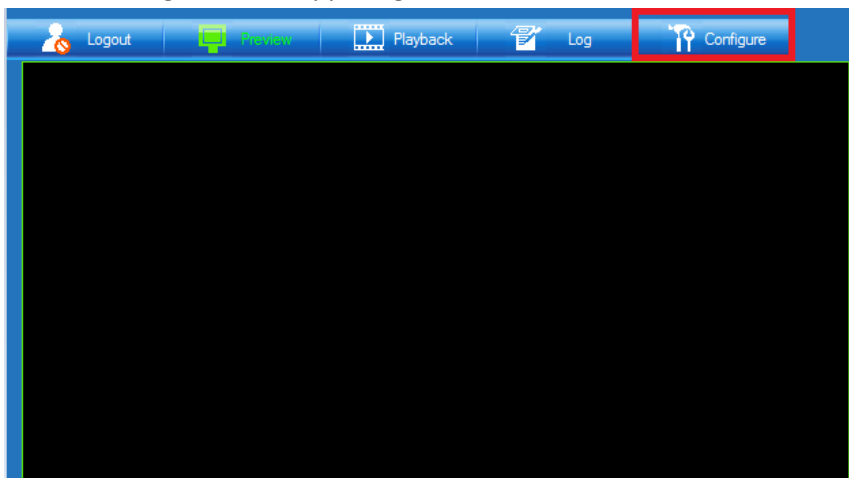
How to upgrade the firmware for the VP-1

1. Log into the camera. The u/p is the same as the VP-16, admin/12345:

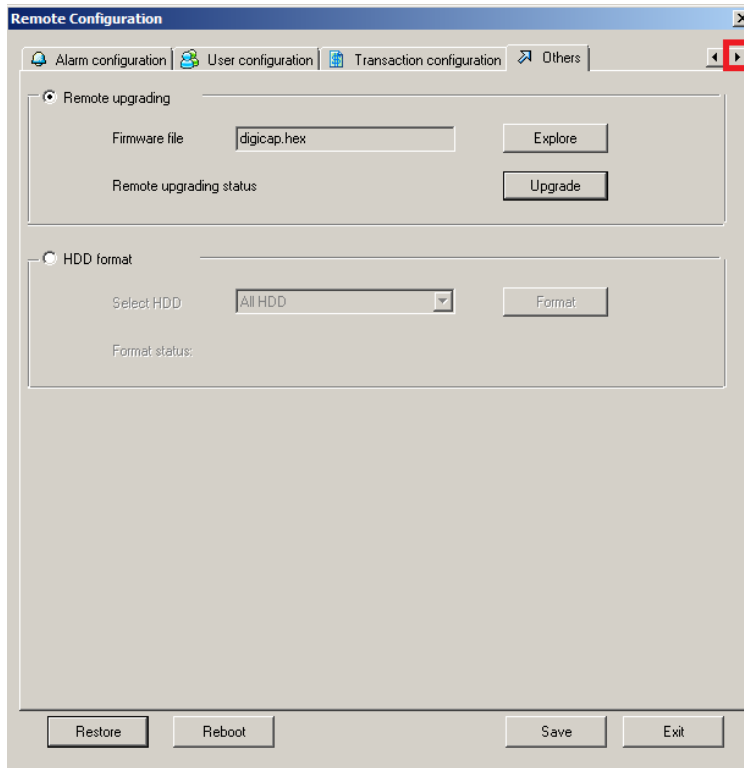


A login form with a light blue background and a dark blue header and footer. It contains three input fields: 'Username:' with the text 'admin', 'Password:' with six asterisks, and 'Port:' with the text '8000'. Below the fields are two buttons: 'OK' and 'Cancel'.

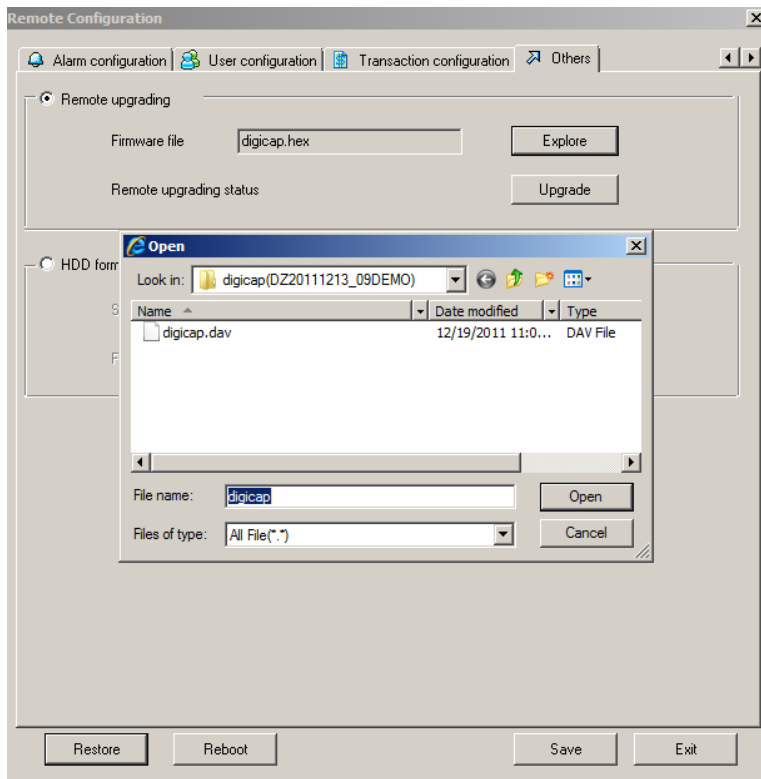
2. Click on Configure in the upper right hand corner:



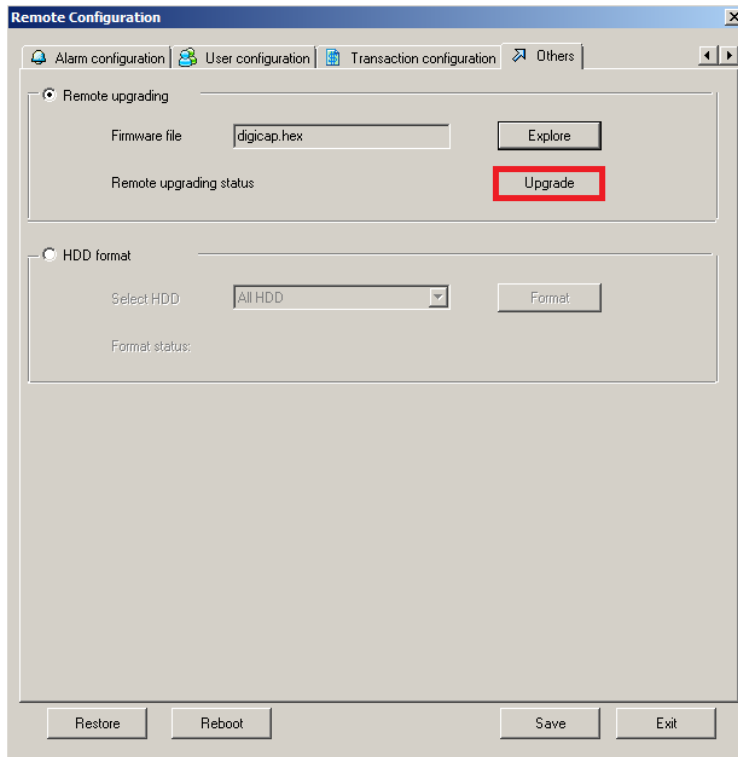
3. Click the right arrow until you see the Others tab, then click Others:



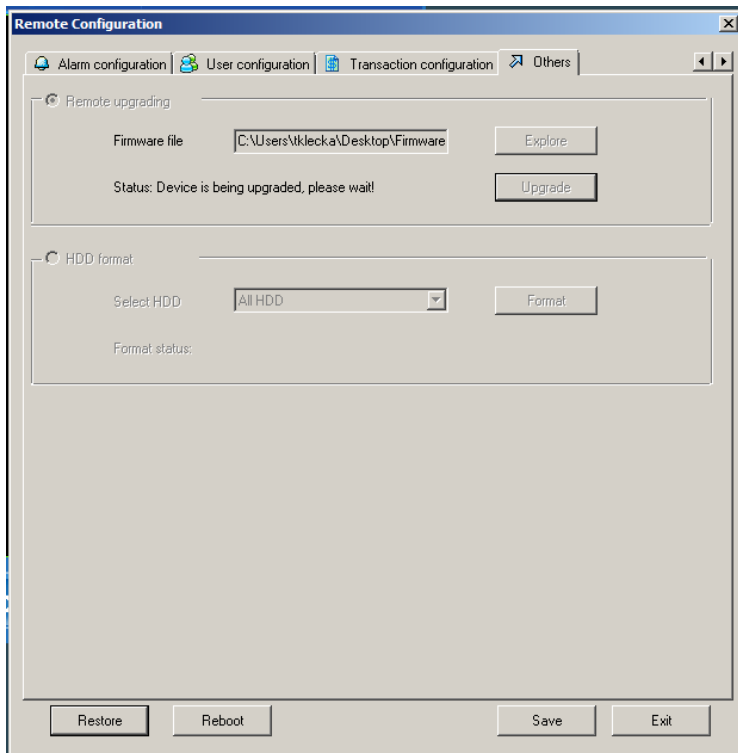
4. Click Explore and browse to the location you saved the VP-1 firmware and click Open:



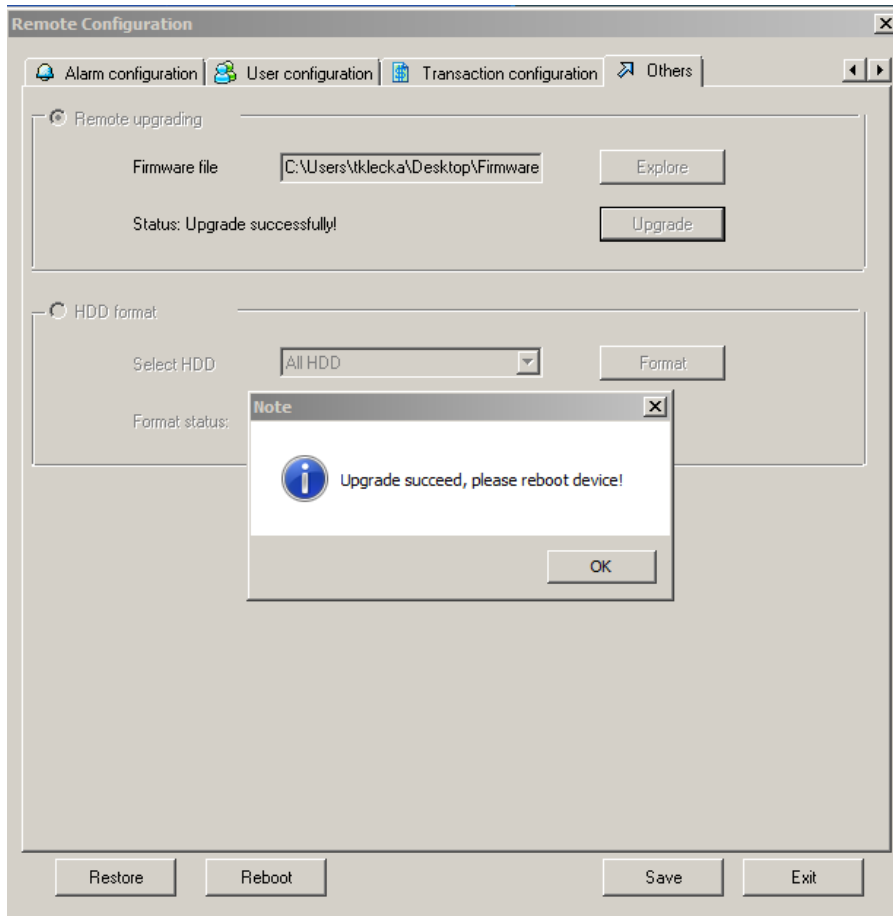
5. Click Upgrade to begin the Upgrade Process:



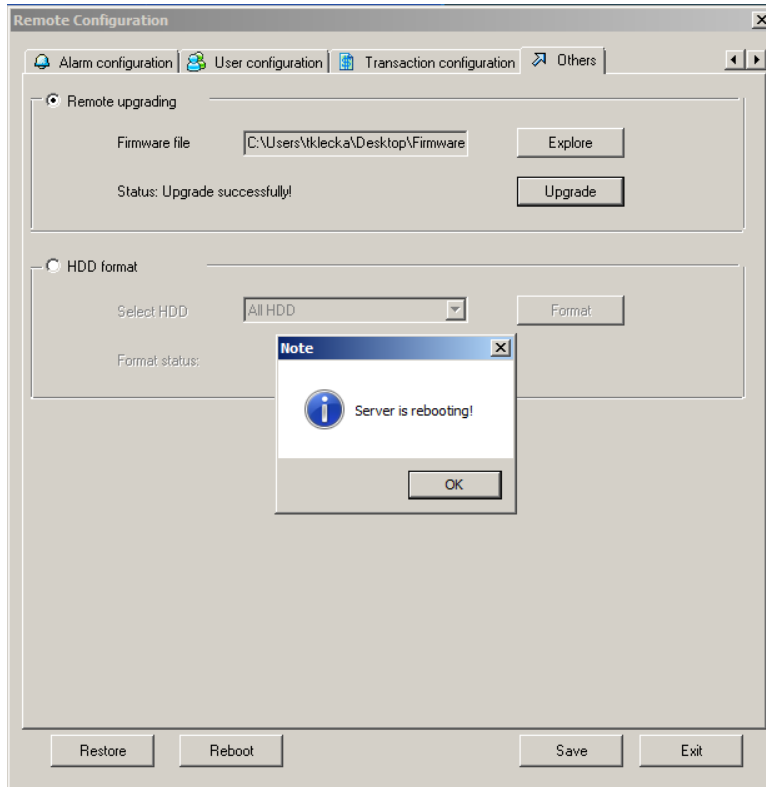
While the upgrade is going through, you will see a message that says, “Device is being upgraded, please wait!”:



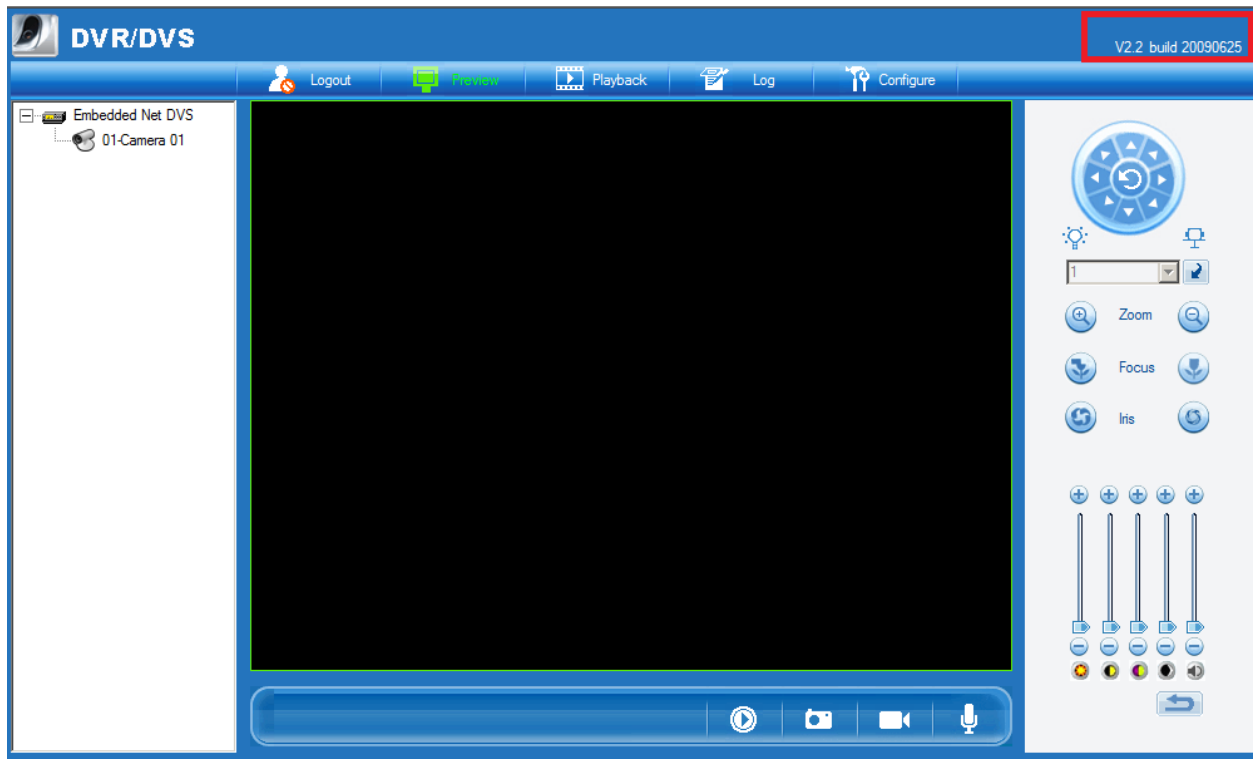
6. Once the upgrade is complete, you will get a message that says, "Upgrade succeed, please reboot device!":



7. To reboot, hit the Reboot button and then click through the Reboot messages that appear:



8. Wait one minute, then close the browser and then log back into the camera your version should be V2.2 build 20090625:



As long as the versions match in the upper right hand corner, the encoder is streaming over RTP and can be added to 4.3.0.58< as a VP-1.