

PACA4/PACA4B

Corner Mount Adapter Bracket

- Durable powder-coat finish
- All aluminum construction
- Threaded bolt inserts to make installation easier and quicker
- 60 Lbs. (27.2 Kg) load rating



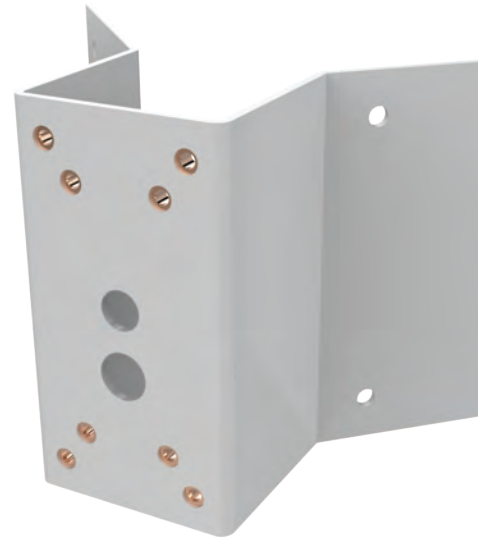
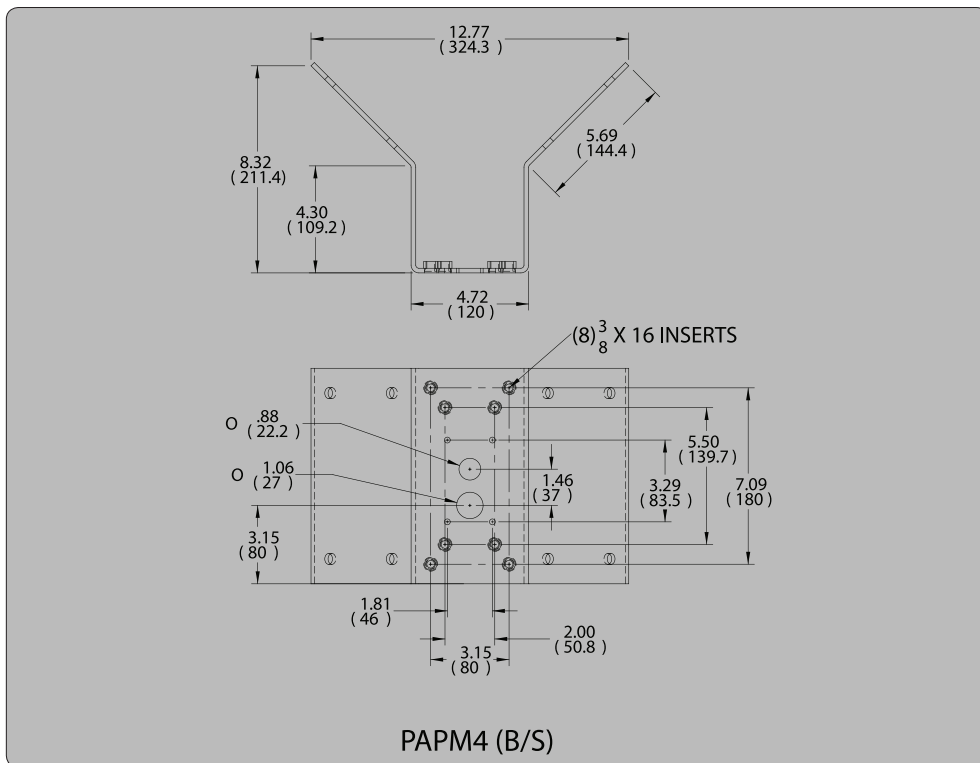
Bid Specifications

The corner mount adapter shall be Panasonic's model PACA4 or PACA4B. The adapter shall be constructed of aluminum and work with PWM20G, PWM20GB, POD9CWA, POD9CWTA, PODV9CWTA, WV-Q122A and WV-Q120 Junction box. The adapter shall allow mounting to an external corner. Brackets shall have a protective powder coat finish, the PACA4 has a black finish while the PACA4B includes a beige finish.

Specifications

| ARCHITECTURAL AND ENGINEER SPECIFICATION | |
|--|--|
| Dimensions (H x W x D) | 8.66" x 12.77" x 8.32" (220 x 324 x 211mm) |
| Weight | 3.75 lbs (1.7Kg) |
| Construction | Aluminum |
| Shipping Specification | |
| Dimensions (H x W x D) | 10" x 14" x 9" (235 x 343 x 229mm) |
| Weight | 4.25 lbs (1.9Kg) |

Architectural Drawings



<http://panasonic.com/security>

Panasonic System Networks Company of America

Surveillance, Monitoring and Video Imaging